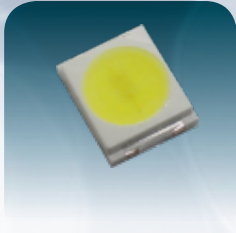
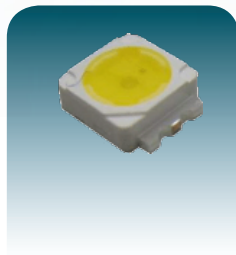


High Power LEDs



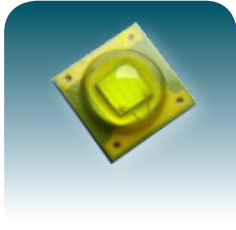
■ QBHP686 Series

Part Number	L x W x H (mm)	Color	Material	Power (W)	I _F (mA)	V _F (V)	Color Temperature	Viewing Angle	Φ _v (lm)
						typ			
QBHP686-IWH	3.5 x 2.8 x 0.8	Warm white	InGaN	0.5	150	3.3	2760-3160	120	36
QBHP686-IWH	3.5 x 2.8 x 0.8	Natural White	InGaN	0.5	150	3.3	3640-4600	120	38
QBHP686-IWH	3.5 x 2.8 x 0.8	Cool White	InGaN	0.5	150	3.3	5450-7400	120	41



■ QBHP685 Series

Part Number	L x W x H (mm)	Color	Material	Power (W)	I _F (mA)	V _F (V)	Color Temperature	Viewing Angle	Φ _v (lm)
						typ			
QBHP685-IWH	6.4 x 5.0 x 1.35	White	InGaN	0.5	150	3.3	3920-4600	120	40
QBHP685-IWU	6.4 x 5.0 x 1.35	Warm white	InGaN	1	350	3.3	2960-3400	120	65
QBHP685-IWU	6.4 x 5.0 x 1.35	Natural White	InGaN	1	350	3.3	3920-4600	120	80
QBHP685-IWU	6.4 x 5.0 x 1.35	Cool White	InGaN	1	350	3.3	5000-6650	120	90



■ QBHP684 Series

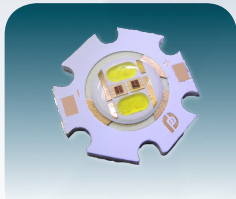
Part Number	L x W x H (mm)	Color	Material	Power (W)	I _F (mA)	V _F (V)	Wavelength (nm)		Color Temperature	Viewing Angle	Φ _v (lm)
						typ	λ _d	λ _p			
QBHP684-RU	3.37 x 3.37 x 1.83	Red	AllInGaP	1	350	2.2	624	632	-	120	55
QBHP684-YU	3.37 x 3.37 x 1.83	Yellow	AllInGaP	1	350	2.2	589	590	-	120	55
QBHP684-IWU	3.37 x 3.37 x 1.83	White	InGaN	1	350	3.5	-	-	2960-6650	120	115



■ QBHP682 Series

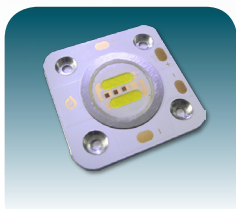
Part Number	L x W x H (mm)	Color	Material	Power (W)	I _F (mA)	V _F (V)	Wavelength (nm)		Color Temperature	Viewing Angle	Φ _v (lm)
						typ	λ _d	λ _p			
QBHP682-IBU	14.5 x 8 x 5	Blue	InGaN	1	350	3.5	470	468	-	120	18
QBHP682-IGU	14.5 x 8 x 5	Green	InGaN	1	350	3.5	525	518	-	120	70
QBHP682-IWU	14.5 x 8 x 5	White	InGaN	1	350	3.5	-	-	2750-9500	120	100
QBHP682-RU	14.5 x 8 x 5	Red	AllInGaP	1	350	2.4	625	632	-	120	40
QBHP682-YU	14.5 x 8 x 5	Yellow	AllInGaP	1	350	2.4	580	590	-	120	37
QBHP682-RGBU	14.5 x 8 x 5	Blue	InGaN	3	350	3.5	465	468	-	120	12
		Green	InGaN		350	3.5	525	518	-	120	60
		Red	AllInGaP		350	2.4	627	632	-	120	27

COB Modules



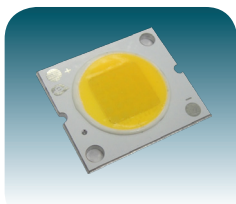
■ QBLB1915-IWU

Part Number	L x W x H (mm)	Color	Power (W)	I _F (mA)	V _F (V)	Color Temperature (K)	Viewing Angle	Φ _v (lm)
					typ			
QBLB1915-IWU	19.9 x 19 x 1.54	White	6	350	16.5	4000	120	370



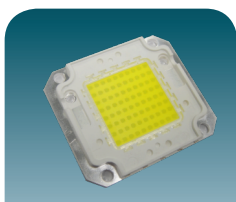
■ QBLB3535-IWU

Part Number	L x W x H (mm)	Color	Power (W)	I _F (mA)	V _F (V)	Color Temperature (K)	Viewing Angle	Φ _v (lm)
					typ			
QBLB3535-IWU	35 x 35 x 2.1	White	11	350	31.5	4000	120	700



■ QBLB2522-IWF

Part Number	L x W x H (mm)	Color	Power (W)	I _F (mA)	V _F (V)	Color Temperature (K)	Viewing Angle	Φ _v (lm)
					typ			
QBLB2522-IWF	25.6 x 22.6 x 2.5	White	25	1500	15.5	4000	120	1200



■ QBLB4640 Series

Part Number	L x W x H (mm)	Color	Power (W)	I _F (mA)	V _F (V)	Color Temperature (K)	Viewing Angle	Φ _v (lm)
					typ			
QBLB4640-IWF	46 x 40 x 4.3	White	50	1500	33	6500	120	4000
QBLB4640-IWG	46 x 40 x 4.3	White	80	2400	33	6500	120	6400
QBLB4640-IWJ	46 x 40 x 4.3	White	100	3000	33	6500	120	7500
QBLB4640-IGJ	46 x 40 x 4.3	Green	100	3000	33	525	120	6300
QBLB4640-IBJ	46 x 40 x 4.3	Blue	100	3000	33	465	120	2800