

**Infrared**

---

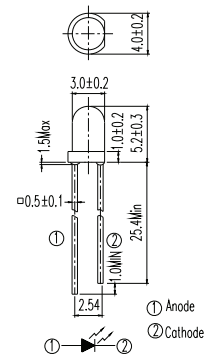
## *Table of Content*

<u><i>Table of Content</i></u>	<i>1</i>
<u><i>Emitter - Lamp Type</i></u>	<i>IR-1</i>
<u><i>Lamp Type</i></u>	<i>IR-4</i>
<u><i>Phototransistor - Lamp Type</i></u>	<i>IR-5</i>

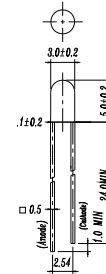


**Infrared — Emitter**

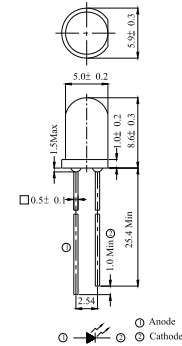
Products	Lens Color	I <sub>F</sub> (mA)	V <sub>F</sub> (V) Max	λ <sub>p</sub> (nm)	E <sub>θ</sub> (mW/Sr)		Emission Angle (2θ 1/2)
					Min	Typ	
<b>3mm Through Hole Lamp, 5.2mm Lens Height</b>							
QBEC5325	Yellow	20	1.65	850	7.8	17.6	25
QBEC5340	Yellow	20	1.65	850	4.0	8.9	40
QBEC5135	Blue	20	1.50	940	4.0	5.6	35
QBEC5150	Blue	20	1.50	940	4.0	7.0	50
QBEC5250	Blue	20	1.6	875	4.0	6.4	30



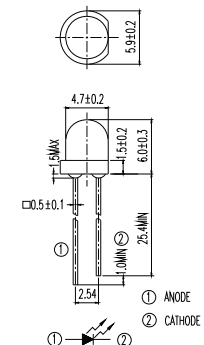
Products	Lens Color	I <sub>F</sub> (mA)	V <sub>F</sub> (V) Max	λ <sub>p</sub> (nm)	E <sub>θ</sub> (mW/Sr)		Emission Angle (2θ 1/2)
					Min	Typ	
<b>3mm Through Hole Lamp, 5.0mm Lens Height</b>							
QBEC5230	Blue	20	1.60	875	5.6	9.3	30
QBEC5330	Water Clear	20	1.65	850	7.8	15	30



Products	Lens Color	I <sub>F</sub> (mA)	V <sub>F</sub> (V) Max	λ <sub>p</sub> (nm)	E <sub>θ</sub> (mW/Sr)		Emission Angle (2θ 1/2)
					Min	Typ	
<b>5mm Through Hole Lamp, 8.6mm Lens Height</b>							
QBED8120	Blue	20	1.50	940	7.8	20	20
QBED8140	Blue	20	1.50	940	5.6	7.8	40
QBED8330	Yellow	20	1.65	850	7.8	15	30
QBED8220	Blue	20	1.60	875	7.8	20	20

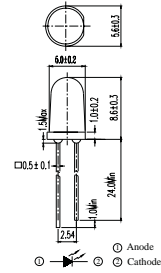


Products	Lens Color	I <sub>F</sub> (mA)	V <sub>F</sub> (V) Max	λ <sub>p</sub> (nm)	E <sub>θ</sub> (mW/Sr)		Emission Angle (2θ 1/2)
					Min	Typ	
<b>5mm Through Hole Lamp, 6.0mm Lens Height</b>							
QBED6130	Blue	20	1.50	940	4.0	6.4	30
QBED6160	Blue	20	1.50	940	2.0	3.5	60
QBED6235	Blue	20	1.60	875	4.0	7.8	35
QBED6325	Water Clear	20	1.65	850	15.0	30	25



Infrared — Emitter

Products	Lens Color	I <sub>F</sub> (mA)	V <sub>F</sub> (V) Max	λ <sub>p</sub> (nm)	E <sub>θ</sub> (mW/Sr)		Emission Angle (2θ 1/2)
					Min	Typ	
<b>5mm Through Hole Lamp, 8.6mm Lens Height</b>							
QBED8120A	Blue	20	1.50	940	7.8	20	20
QBED8220A	Water Clear	20	1.60	875	11.0	20	20



Infrared — Photodiode

Products	Lens Color	$\lambda_p$ (nm)	$B_{VR}$ (V) Min	$I_D$ (nA) Max	$I_L$ ( $\mu$ A)		Rise/Fall Time (ns)	
					Min	Typ		
<b>3mm Through Hole Lamp, 5.2mm Lens Height, Daylight Filter</b>								
QSC5P120	Black	940	32.00	10	1.0	3.0	6/6	

Products	Lens Color	$\lambda_p$ (nm)	$B_{VR}$ (V) Min	$I_D$ (nA) Max	$I_L$ ( $\mu$ A)		Rise/Fall Time (ns)	
					Min	Typ		
<b>3.8mm Through Hole Lamp, 6.6mm Lens Height, Daylight Filter</b>								
QSB6P120	Black	940	32.00	30	10.2	18	50/50	

Products	Lens Color	$\lambda_p$ (nm)	$B_{VR}$ (V) Min	$I_D$ (nA) Max	$I_L$ ( $\mu$ A)		Rise/Fall Time (ns)	
					Min	Typ		
<b>5mm Through Hole Lamp, 8.6mm Lens Height, Daylight Filter</b>								
QSD8P120	Black	940	32.00	30	25	35	45/45	

Products	Lens Color	$\lambda_p$ (nm)	$B_{VR}$ (V) Min	$I_D$ (nA) Max	$I_L$ ( $\mu$ A)		Rise/Fall Time (ns)	
					Min	Typ		
<b>5mm Rectangular Lamp, 7.6mm Lens Height, Daylight Filter</b>								
QSA7P120	Black	940	32.00	30	10.2	18	50/50	

